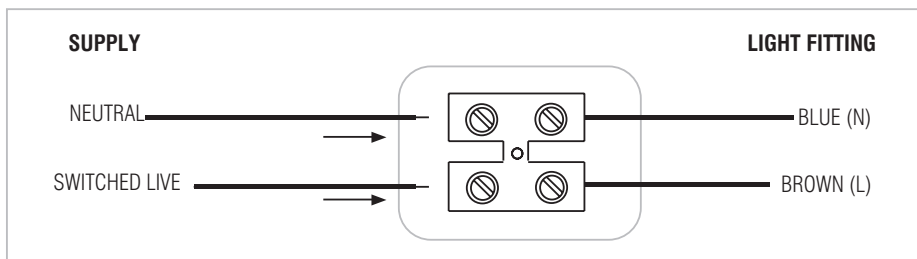


Wiring

Having correctly identified the wiring from your existing light fitting, pull the mains wire through the hole and connect to the connection block inside the product in the following way:

If there are any incoming earth cables, they must be joined together and well insulated with good quality insulation tape. This is to ensure earth continuity throughout your property.



Check that...

You have correctly identified the wires.

The connections are tight.

No loose strands have been left out of the connection block.

Technical data

Supply Voltage: 240 V~, 50 Hz

Bulb Type: 18W LED module (SMD), 3000K/RGB

The light source of this luminaire is not replaceable; when the light source reaches its end of life the whole luminaire shall be replaced.



Conformity with all relevant EC Directive requirements.



The power supply is double insulated and does not require connection to an earth circuit.



Waste electrical products should not be disposed of with household waste. Please recycle where facilities exist. Check with your Local Authority or local store for recycling advice.



This product is suitable for dimming with 'SaxbySmart' app, Google Home or Amazon Alexa.

Care and Safety

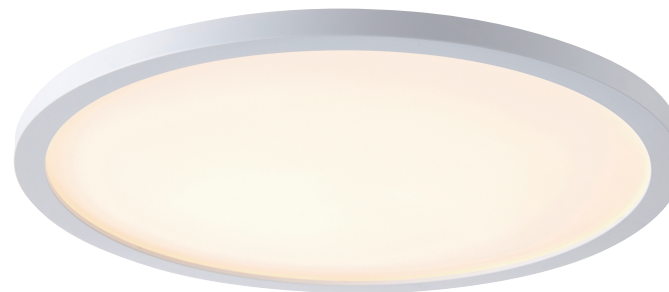
We recommend cleaning with a soft dry cloth. Do not use solvents or abrasive cleaners as these could damage the finish.

For your safety, always switch off the power supply before cleaning.

Instruction manual

Smart Halo

96197



Thank you for purchasing this light fitting. Please read the instruction carefully before use to ensure safe and satisfactory operation of this product. Please retain these instruction for future reference.

Warning



This power supply is double insulated and does not require connection to an earth circuit.

Please read these instructions carefully before commencing any work.

This unit must be fitted by a competent and qualified electrician.

Check the pack and make sure you have all the parts listed.

Install in accordance with the IEE Wiring regulations and current Building Regulations.

To prevent electrocution switch off at mains supply before installing or maintaining this fitting. Ensure other persons cannot restore the electrical supply without your knowledge. If you are in any doubt, please consult a qualified electrician.

This light fitting should be connected to a circuit.

If replacing an existing fitting, make a careful note of the connections.

This system contains non-replaceable parts and cannot be serviced. If damage occurs the part should be scrapped.

Waste electrical products should not be disposed of with household waste. Please recycle where facilities exist. Check with your local authority or retailer for recycling advice.

Layout

Plan the desired layout of these fittings carefully, ensuring the cables will reach the distances between each light fitting.

Avoid locating any cables in positions that would cause a hazard. Position cables and junction boxes (not supplied) away from areas where they may be at risk from being cut, trapped or damaged.

The mains supply cable must have a minimum cross section area of 1.0mm².

Cables must be protected using suitable conduit or plastic trunking.

Installation

Existing fittings must be completely removed before installation of a new product. Before removing the existing fitting, carefully note the position of each set of wires.

Note that the switch is turned off before installation.

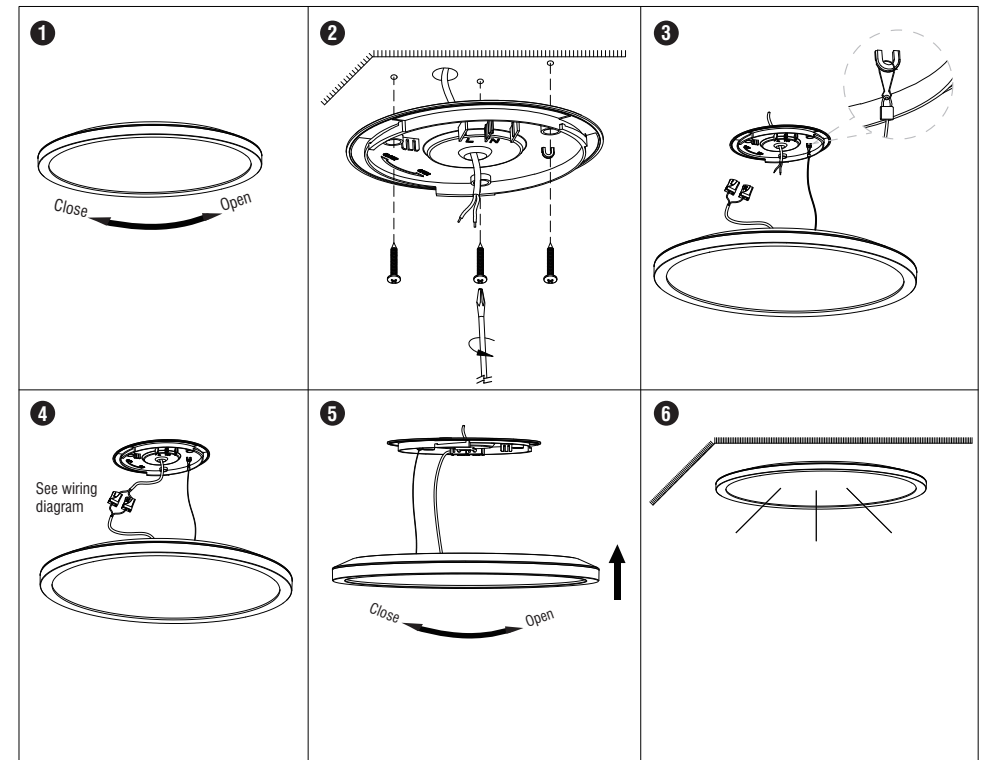
The ceiling surface must be flat and smooth to ensure a good fit.

This product is suitable for dimming with 'SaxbySmart' app, Google Home or Amazon Alexa. Please refer to the 'SaxbySmart' manual for specific operations.

We recommend putting the wifi receiver within 20-25 meters of your WI-FI Hub. This will vary depending on the strength of your WI-FI coverage.

We recommend testing the position before full installation.

- Twist and remove the lamp cover from the product, keep safe for refitting later.
- Using the rear plate as a template mark the position to drill out the fixing holes. Take care to avoid damaging any concealed wiring and pipes.
- Fix the rear plate into the position using the installation plugs and screws.
- To be safe, hung the safe suspension line to the rear plate in order to avoid damage lamp cover by falling down during installation or using.
- Pull the cable through the cable entry hole and seal to maintain the IP rating and wire as detailed Wiring Diagram.
- Twist the lamp cover back onto the product and lock in place.
- Replace fuse or circuit breaker and switch on. Your light is now ready for use.



Create scenes to suit your way of living or working

Educate or program your voice control device to suit you. Control multiple devices in a single room or building by creating scenes within the Saxby Smart app or through Amazon Alexa or Google Assistant.



Office lights come on, cool white & 80% brightness



Living room lights dim to 40% brightness



Lights dim as the mood changes for evening dinner

No HUB required or complex installations

Saxby Smart fittings come fully equipped with a built in chip that connects to your Wi-Fi router. Simply download the Saxby Smart app to your smartphone, register and add your lighting devices. You're good to go - create a personalised lighting experience.



Install fitting



Register your account & add devices



Your Saxby Smart app is working



'Smart Life'

Connect to your Amazon Alexa or Google Assistant using 'Smart Life'



USER MANUAL

ENJOY YOUR SAXBY SMART LIGHT!

INTELLIGENT LIGHTING
saxbysmart



Adding a device

Download the 'Saxby Smart' app

- Please scan the QR code or search 'Saxby Smart' to download on your App Store or Google Play.



App Store



Google Play

Registration & log in

- Enter your email or mobile phone number to register.
- A verification code will be sent via email or text message, enter this when prompted.
- Set your password.

This Saxby Smart product will support 2.4G WIFI bands only

Connecting your devices

- Click 'Add device'.
- Turn you device on and leave for 10 seconds.
- Turn off and on repeatedly three times.
- Your light will start to blink, click 'Confirm light blink rapidly'.
- Enter your Wi-Fi details and click 'Confirm'.
- Rename your device and click 'Completed'.

Controlling your Saxby Smart fitting

- Click 'White mode' to adjust the colour temperature and brightness.
- Click 'Schedule' to set up a day to day planner for your lights.
- Click the triple dot icon at in the top right corner to create scenes.

Connecting to Amazon Alexa

- Open your Alexa app.
- Click Skills and Games.
- Search 'Smart Life' and click 'Enable to use'.
- Enter the same log in details used for your Saxby Smart app.
- Alexa will now discover and connect your devices.
- Your light is now set up. Try a voice command like 'Alexa, turn off the light'.



Connecting to Google Home

- Open your Google Home app.
- Click Home Control and the + button to add device.
- Search 'Smart Life'.
- Enter the same log in details used for your Saxby Smart app.
- Assign your light to a room.
- Your light is now set up. Try a voice command like 'Hey Google, turn off the light'.

